



# CHICOPEE®

Fluid Mopping System & Extension Handle

## FREQUENTLY ASKED QUESTIONS (FAQs)

### What does the term frame refer to?

- The frame refers to the end piece of the mop tool where the mop is attached

### What does the term handle refer to?

- The handle refers to the “stick” or long pole that is then attached to the frame, to form a mopping tool

### What does the term kit refer to?

- When we sell a product as a kit it means it includes both the Handle and the Frame, but no mops

### When I turn the Fluid Mopping System upside down some liquid leaks out, why is this?

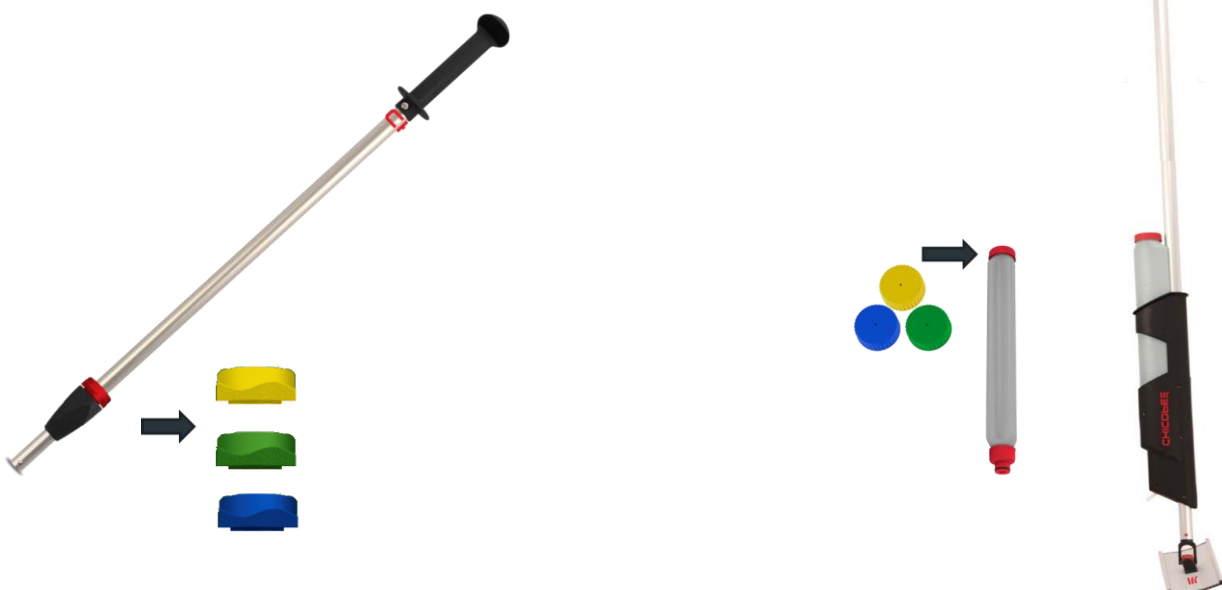
- The Fluid Mopping System has a water tight reservoir that can be stored with cleaning chemicals for up to 1 week. But due to the water in the tubing within the system if you turn the tool upside down water will leak out the back of the system

### Can I clean walls with the Fluid Mopping System?

- Due to the weight of the tool with liquid and the points mentioned above we do not recommend this tool for cleaning walls. We would suggest our extension handle and Microfibre Mop Super

### Can you colour code Chicopee Mopping systems?

- Yes, both of our Mopping systems are easily colour coded
  - Fluid Mopping System comes with 4 colour coded bottle tops
  - Extension Handle comes with 4 colour coded collars





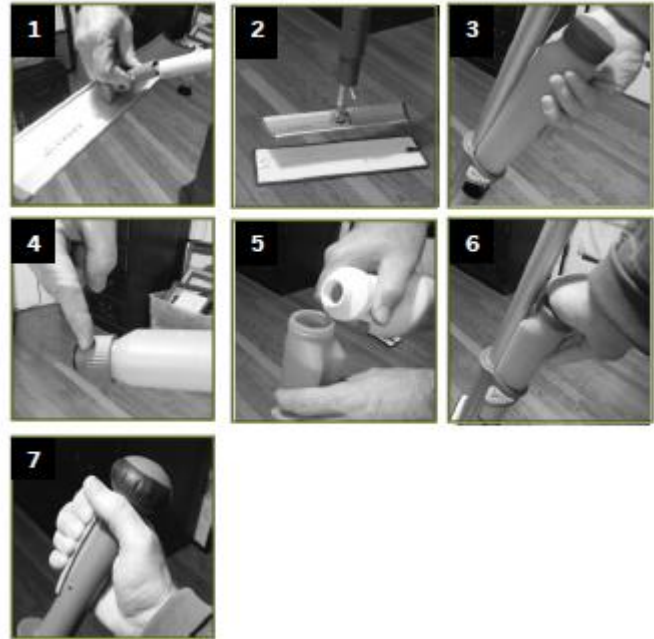
### Can you replace the Velcro strips on the Micro Velcro frame?

No you cannot replace the micro velcro directly. This is because you must use rigid strips of Velcro to be able to replace them and these were not compatible with our soft frame specifically designed for lightweight disposable floor pads. But we do offer replaceable foam frames (product code 76161) which come with new micro velcro. These will retail around €15 and then you will have a brand new mop head and micro Velcro.

### How to prepare your Fluid Mopping System

• Please follow the simple steps below

1. Attach the Mop Frame to the handle
2. Place Chicopee Microfibre Mop on the floor, it will attach with the micro Velcro
3. Remove the fluid reservoir, by holding firmly and pulling up
4. Firmly tighten the bottom cap
5. Remove top cap and fill with cleaning chemical of your choice
6. Place reservoir back into the frame, push down until you hear it click into place
7. Press trigger to release liquid as required whilst mopping



### Why do you sell the Fluid Mopping System as a kit, but not the extension handle?

• The Fluid Mopping System is designed for wet use and we therefore think it is unlikely that it would be used with our Zip channel frame. Whereas the extension handle can be used with wet mops, such as Chicopee® Microfibre Mop Super or dry dusting like Chicopee® Stretch n Dust. So by selling the handle and the frame separately you can choose which suits you best and bundle together for final customer use.

### Do the Chicopee Mopping systems come with floor mops?

• No, all tools are sold without cleaning chemicals or floor mops. These should be purchased through your local Chicopee® distributor.

### What chemicals can I use with the Fluid Mopping System?

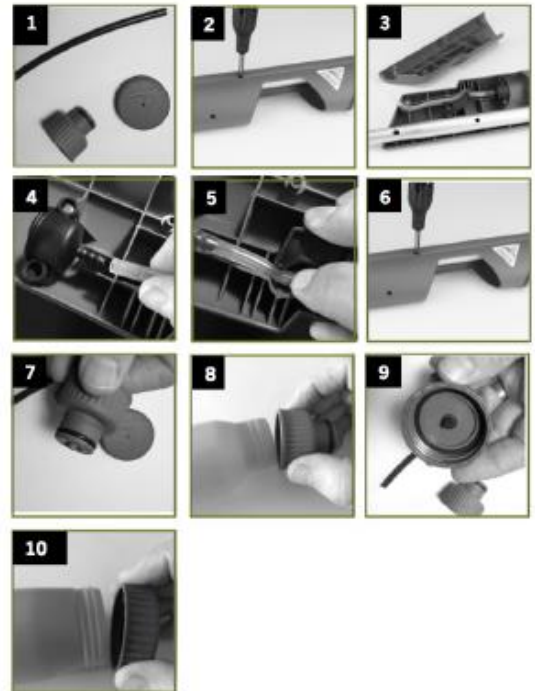
• Neutral floor cleaners, quat or phenolic disinfectants, Chlorine and ceramic tile floor cleaners.



### Can I replace parts on the Fluid Mopping System if they wear out over time?

• Yes, we offer a renewal kit which contains all items needed to fully renew your Fluid Mopping System, this takes 5 minutes and can be done with just a Philips head screwdriver. It is the only system available on the market which can be renewed.

1. Order your renewal kit which contains;
  - a. Grey tubing
  - b. Top Cap
  - c. Bottom Cap
  - d. Spare screws
2. Remove the reservoir bottle and place mop tool on its side. Remove all 5 screws and place them in a safe place
3. Turn the mop tool over, so that you can remove the plate and see the inside of the tool
4. Gently pull the tubing away from the plastic join
5. Attach the new tubing and guide through the dry valve, pulling the trigger if needed to release the valve
6. Turn the tool over again and replace all 5 screws, do not over tighten
7. Remove the old bottom cap
8. Replace with new upgraded bottom cap, which has increased chemical resistance
9. Remove the old top cap
10. Replace the top cap with your new one, again not overtightening. You are now ready to go with a fully renewed Fluid Mopping System



### How much force is needed to pull the trigger, doesn't it risk RSI (repetitive strain injury)?

• We have tested the trigger and it requires 2.75kg of force or less, this is well below the suggested limit for such applications and therefore we believe the tool to be in compliance with the required legal limits.

### Why do you use a tube for liquid dispensing and not spray?

• Spray systems are not really suitable for industrial applications in our opinion, and they are also prone to clogging due to Clack / Calcium / Limescale in hard water areas. For industrial wet mopping you need a fairly significant amount of liquid and with spraying you need to pull the trigger much more. With this system the end "hose" is also fully replaceable if it ever wears out, so it's a very robust system.



### Why does the liquid only come out in one place, some tools dispense liquid across the tool.

- We do not believe that dispensing liquid across the mop makes any difference in use, but it does add complexity and failure points to the tool. When wet mopping it is very easy to pull the trigger and create a line of liquid before pulling the mop back over the liquid. The mop also becomes saturated very quickly creating an even distribution of liquid.

### How do your disposable products compare to washable products in Life Cycle Analysis?

- It is often assumed that washing is “better” than disposing of products. This is being proven to be untrue both from an energy consumption and cost point of view. Microfibre floor pads are traditionally very heavy products, designed to hold a large amount of liquid in the mop itself. This means increased burden to produce (more fibres), increased transportation (less pieces per shipment) and higher energy consumption when washing (less pieces per wash). All of these combined give the LCA analysis below vs our Microfibre Mop Super. If you consider that this is our heaviest most durable product then the story behind disposable vs washable is not as one sided as some people assume.

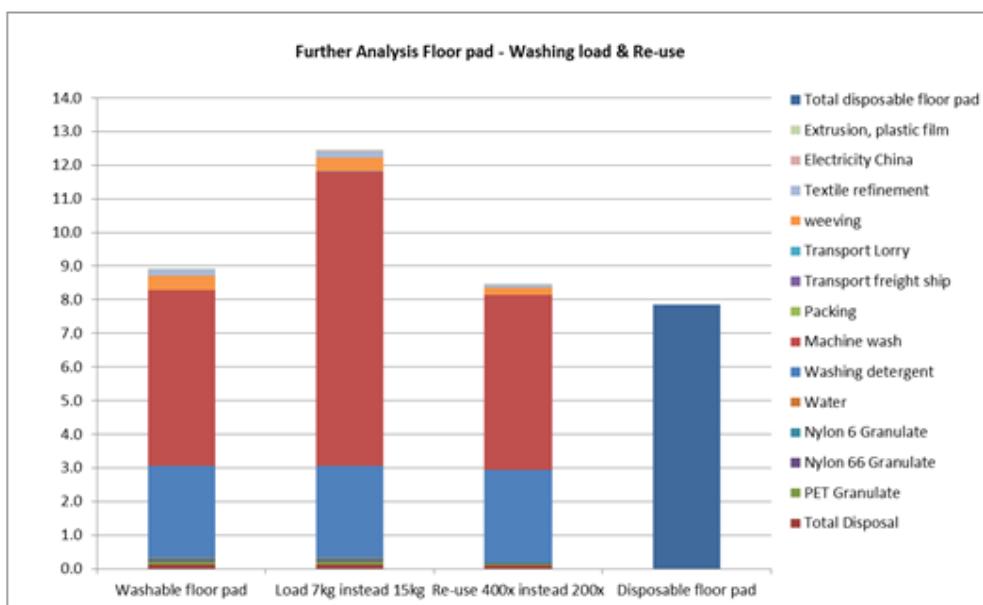


## LCA (Life Cycle Analysis)

### 2. Microfibre Floor pad - Super

Load washing machine 7kg instead of 15.5kg.

Re-use wipe 400 times instead of 200 times.





**Are the tools completely free of (magnetic) metal, incl. screw/studs and technique inside the handle?**

- No, they are not completely free from these metals. Some parts of the Fluid Mopping system, Extension handle or accessories contain (magnetic) metal.





## Floor tools product overview

Floor Tool Pricing	FLOOR TOOLS					
Description	Chicopee Fluid Mop Kit - S	Chicopee Fluid Mop Kit - L	Chicopee Extension Handle	Chicopee Zip Channel Frame 16" / 40cm	Chicopee Zip Channel Frame 22" / 56cm	Chicopee Micro velcro Frame 16" / 40cm
SKU code	76500	76580	76720	76162	76220	76160
Size	132cm	152cm	115-180cm	40cm	56cm	40cm
Pieces per pack	1 Frame, 1 Handle	1 Frame, 1 Handle	1 Handle	1 Frame	1 Frame	1 Frame
Packs per Case	6	6	6	6	6	6

ACCESSORIES			
Colour ring kit - Chicopee Extension Handle	Chicopee MicroVelcro Foam replacement	Chicopee Fluid Renewal Kit	Chicopee Fluid Reservoir - Replacements
76730	76161	76240	76210
NA	40cm	NA	620ML
4 Colour rings	1 Frame cover	x1 valve, x1 tube, x1 bottom cap	x1 Reservoir x4 caps
36	6	12	12